



EXCLUSIVE LISTING










PINNACLE REALTY
OF NEW YORK, LLC

58-17 59th Drive
Maspeth, NY 11378

For Sale

**Modern 11,000 Sq. Ft. Building + 14,000 Sq. Ft. Yard
For Sale with National Tenant**

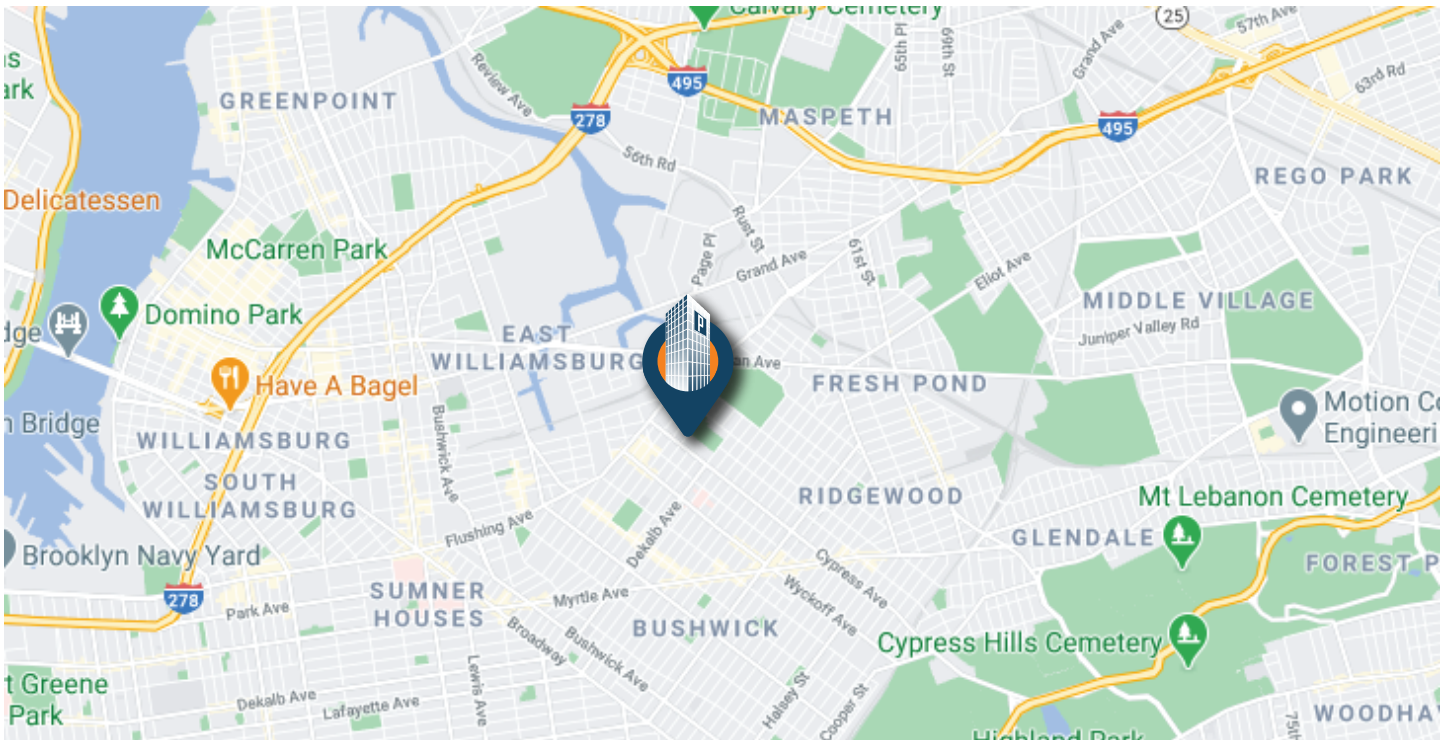
Sq. Ft.	Types	Loading	Ceiling	Zoning	Parcel ID
					 Block 2654
11,000 Warehouse	Industrial	4 Drive-In Doors	20'-30'	M1-1	 Lot 6
14,000 Land	Land office				



34-07 Steinway Street, Suite 202 | Long Island City, NY 11101

718-784-8282

pinnaclereny.com



FEATURES

- ✓ 11,000 Sq. Ft. 2-Story Building + 14,000 Sq. Ft. Land
- ✓ Fenced, Paved and Secure
- ✓ 6,250 Sq. Ft. Ground Floor with 20' - 30' Ceiling Height
- ✓ 3,750 Sq. Ft. Second Floor Finished Office
- ✓ 1,000 Sq. Ft. Mezzanine
- ✓ 4 Drive-In Doors

Property Map
58-17 59th Drive
Maspeth, NY 11378



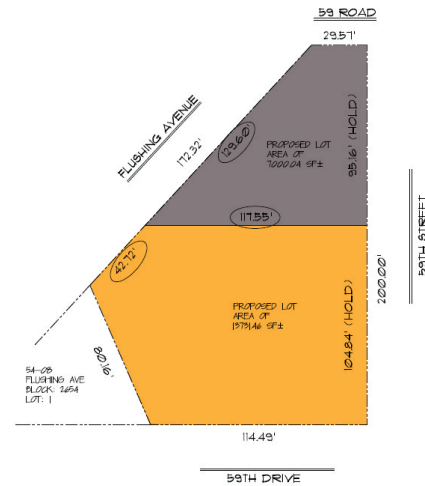
ESTIMATED TRAVEL TIMES & TRANSPORTATION



- 12 Minutes to Queens Midtown Tunnel
- 12 Minutes to Long Island Expressway
- 13 Minutes Brooklyn-Queens Expressway



B57: Flushing Ave/60th St



For More Information About This Property Contact Exclusive Agents:

George Margaronis
Partner

gmargaronis@pinnacleereny.com
 718-784-8404

Decio Baio
Partner

dbaio@pinnacleereny.com
 718-784-8436



34-07 Steinway Street, Suite 202 | Long Island City, NY 11101

718-784-8282

pinnacleereny.com