



EXCLUSIVE LISTING





PINNACLE REALTY
OF NEW YORK, LLC

**282 Moffat Street
Brooklyn, NY 11207**

For Lease

Bushwick Land For Lease @ L Train **15,750 Sq. Ft. Available Immediately**

Sq. Ft.	Type	Zoning	Block	Lot
 15,750	 Land	 M1-1	 3448	 30



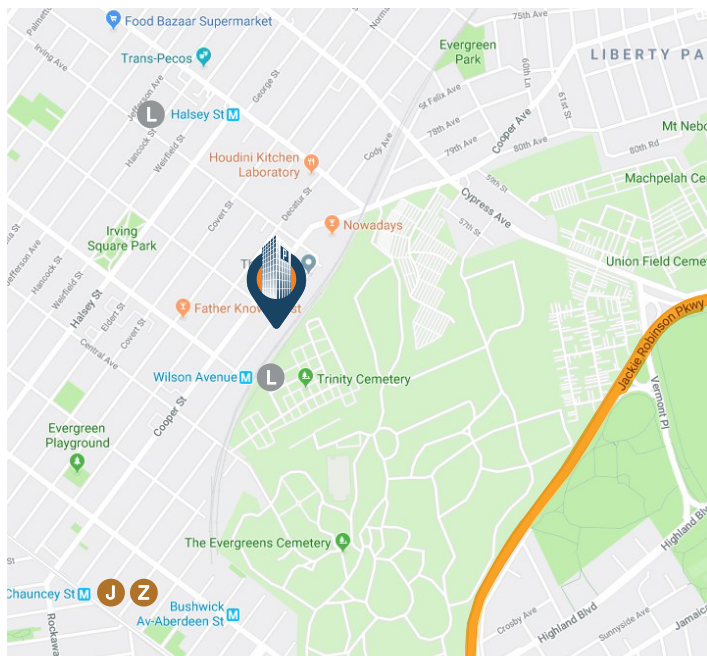
34-07 Steinway Street, Suite 202 | Long Island City, NY 11101

718-784-8282

pinnacle.renny.com

Features

- ✓ 15,750 Sq. Ft. Available Immediately
- ✓ Fenced and paved
- ✓ Double-Wide Gate for Street Access
- ✓ Electricity Available
- ✓ Centrally Located on Queens / Brooklyn Border



TRANSPORTATION



Wilson Ave



Chauncey Street



B20: Decatur St / Knickerbocker Ave



Knickerbocker Ave / Cooper St

Jackie Robinson Parkway

Brooklyn-Queens Expressway

Long Island Expressway

Myrtle Avenue

For More Information About This Property
Contact Exclusive Agents:

Paul Bralower
Associate Broker

pbralower@pinnacleereny.com

718-371-6402

Brendan Burke
Associate Broker

bburke@pinnacleereny.com

718-371-6403

See More Online
282 Moffat Street
Brooklyn

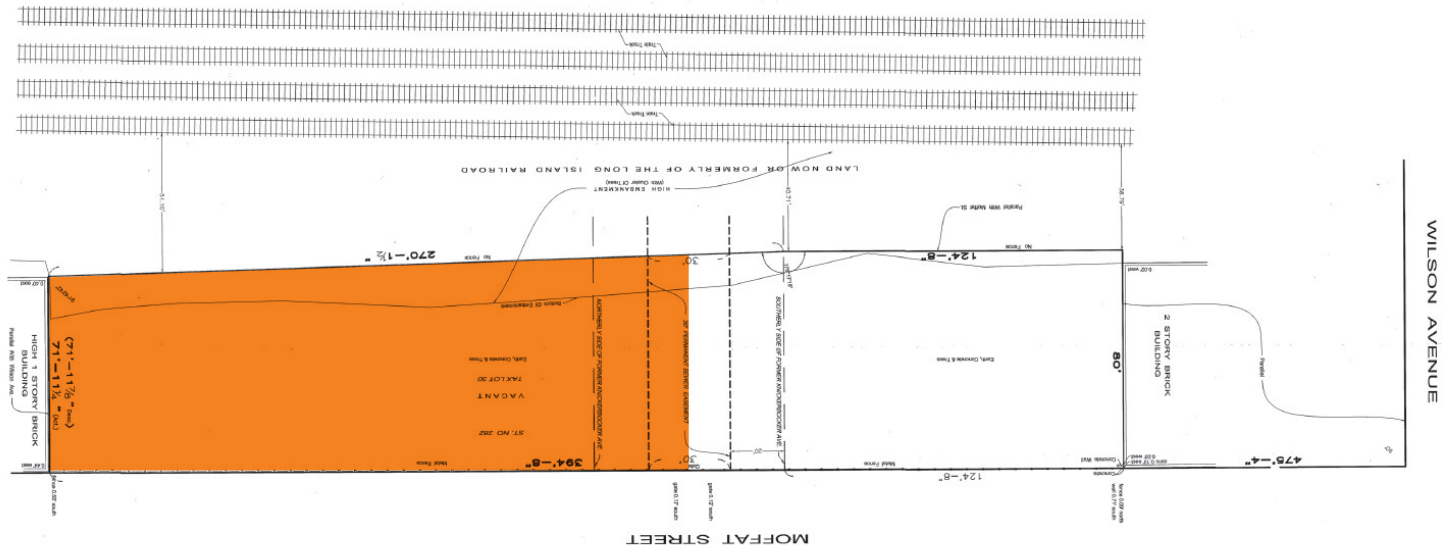


34-07 Steinway Street, Suite 202 | Long Island City, NY 11101

718-784-8282

pinnacleereny.com

SURVEY



PHOTOS

